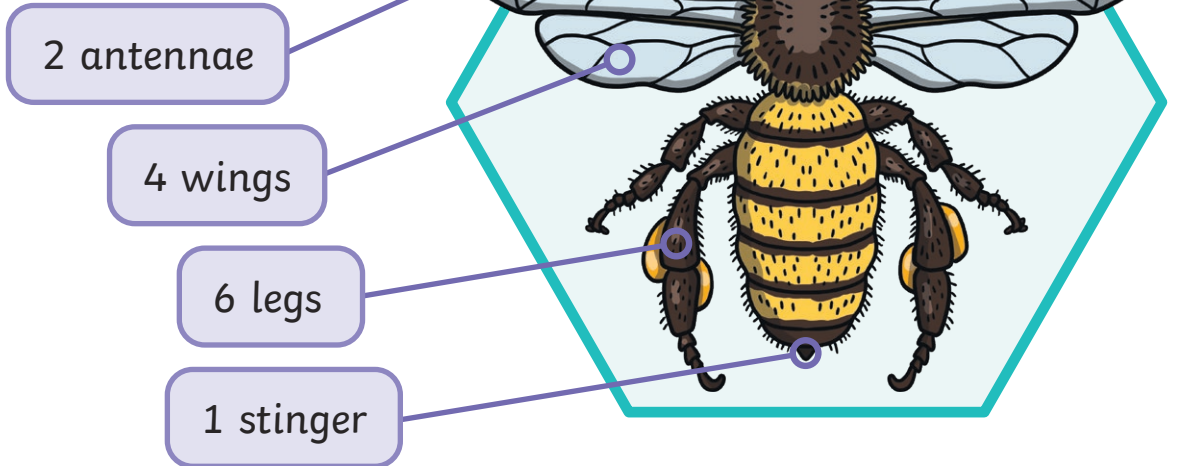


All About Honeybees

What Is a Honeybee?

Honeybees are insects. They are yellow and black.



Where Do They Live?

Honeybees live in a nest.

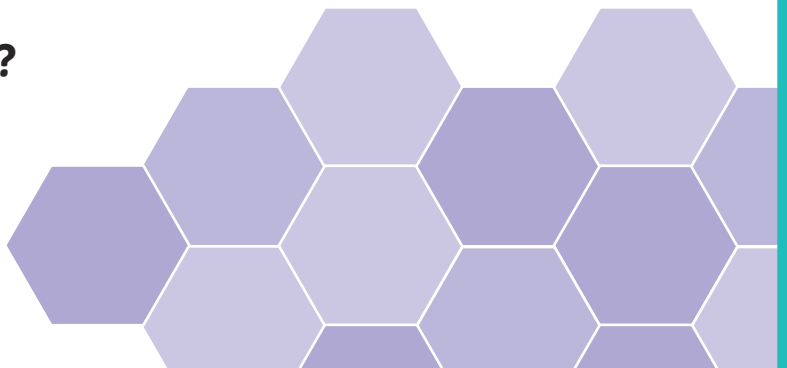
There are three types of honeybee in a nest:

- worker
- drone
- queen

The nest is made up of wax hexagons.

What Is in the Hexagons?

- the queen's eggs
- pollen
- honey



What Do They Eat?

Honeybees eat pollen from flowers.

Some sticks to their bodies.

It then gets dropped onto a different flower.

This helps new plants to grow.

Honeybees eat nectar from flowers.

They take the sweet liquid back to the nest.

They chew it until it turns to honey.

They save the honey to eat in winter.



pollen



honey

Questions

1. Which type of animal is a honeybee? **Tick one.**

- mammal
- reptile
- insect

2. How many legs does a honeybee have? **Tick one.**

- 2
- 4
- 6

3. Where do honeybees live? **Tick one.**

- in a nest
- in a dam
- in a pond

4. Where do honeybees get their food? **Tick one.**

- from flowers
- from rivers
- from mud

5. Which food do bees make? **Tick one.**

- cheese
- honey
- carrots

Answers

1. Which type of animal is a honeybee? **Tick one.**

- mammal
- reptile
- insect**

2. How many legs does a honeybee have? **Tick one.**

- 2
- 4
- 6**

3. Where do honeybees live? **Tick one.**

- in a nest**
- in a dam
- in a pond

4. Where do honeybees get their food? **Tick one.**

- from flowers**
- from rivers
- from mud

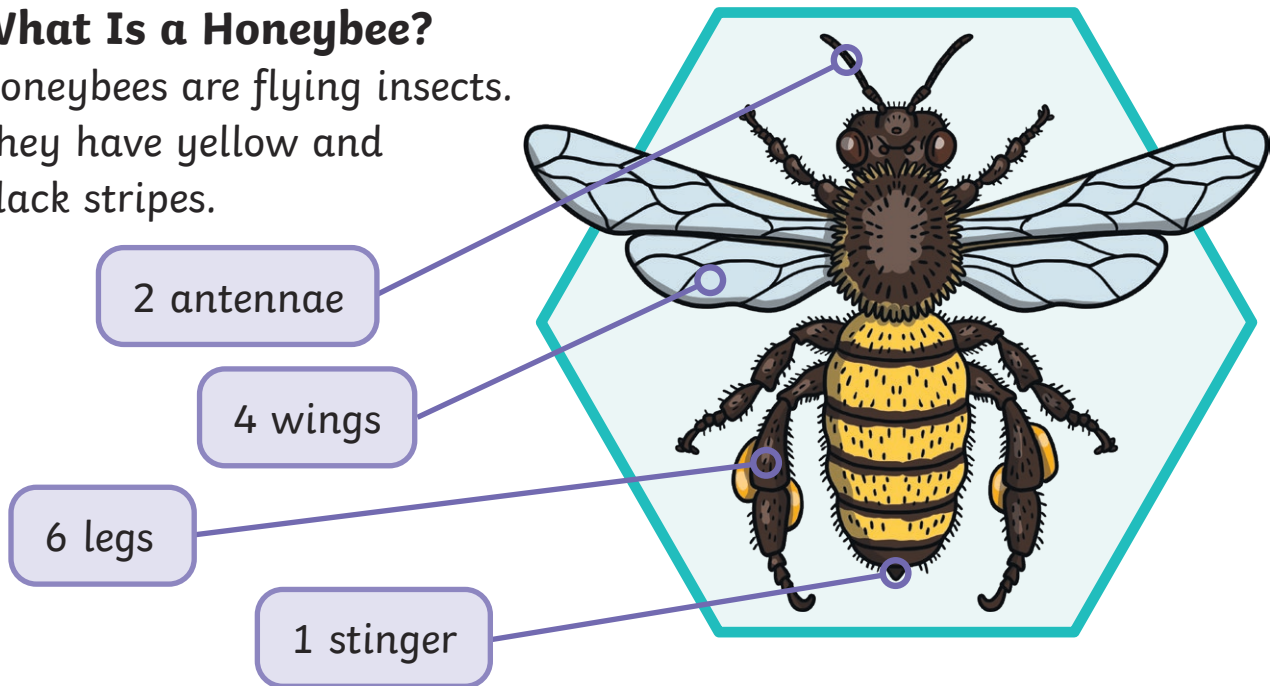
5. Which food do bees make? **Tick one.**

- cheese
- honey**
- carrots

All About Honeybees

What Is a Honeybee?

Honeybees are flying insects. They have yellow and black stripes.



Where Do They Live?

Thousands of honeybees live together in a nest. There are three types of honeybee in a nest:



workers
small
female bees
with stingers

drones
male
bees without
stingers

queen
one large
bee that
lays all the
eggs

The nest is made up of hexagons. The honeybees make them from wax.

What Do They Store in the Hexagons?

- the queen's eggs
- pollen
- honey

What Do They Eat?

Honeybees eat pollen from flowers. Some pollen gets stuck to their bodies. It then gets dropped onto a different flower. This is called 'pollination'. Pollination helps new plants to grow. Honeybees help humans to grow the plants we eat!



pollen

Honeybees also get nectar from flowers. Nectar is a sweet liquid.

They eat some and store some in their 'honey stomachs'. They take the nectar back to the nest. They pass it to other worker bees. These bees chew the nectar until it turns into honey.



honey

They put the honey into a hexagon and save it to eat in winter. This makes sure that they have food to eat when there are fewer flowers around.

Questions

1. Which type of honeybee lays eggs? **Tick one.**

- worker
- drone
- queen

2. Draw **three** lines to match each word to its meaning.

nest ●

nectar ●

antennae ●

● a sweet liquid found
in flowers

● where honeybees live

● long feelers on an
insect's head

3. How many honeybees live together in a nest? **Tick one.**

- hundreds
- thousands
- millions

4. Fill in the missing word.

The nest is made up of _____.

5. What do honeybees eat? **Tick one.**

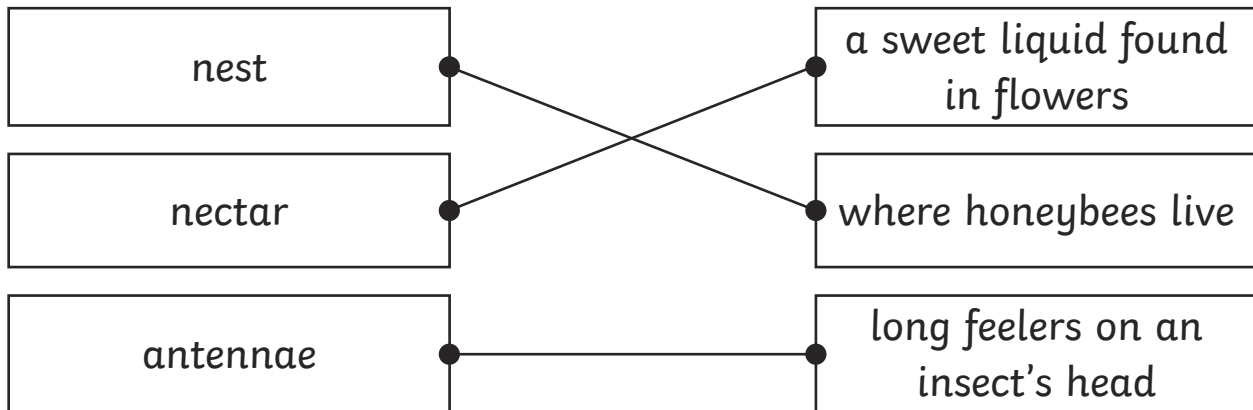
- wax, eggs and honey
- pollen, eggs and humans
- pollen, nectar and honey

Answers

1. Which type of honeybee lays eggs? **Tick one.**

- worker
- drone
- queen**

2. Draw **three** lines to match each word to its meaning.



3. How many honeybees live together in a nest? **Tick one.**

- hundreds
- thousands**
- millions

4. Fill in the missing word.

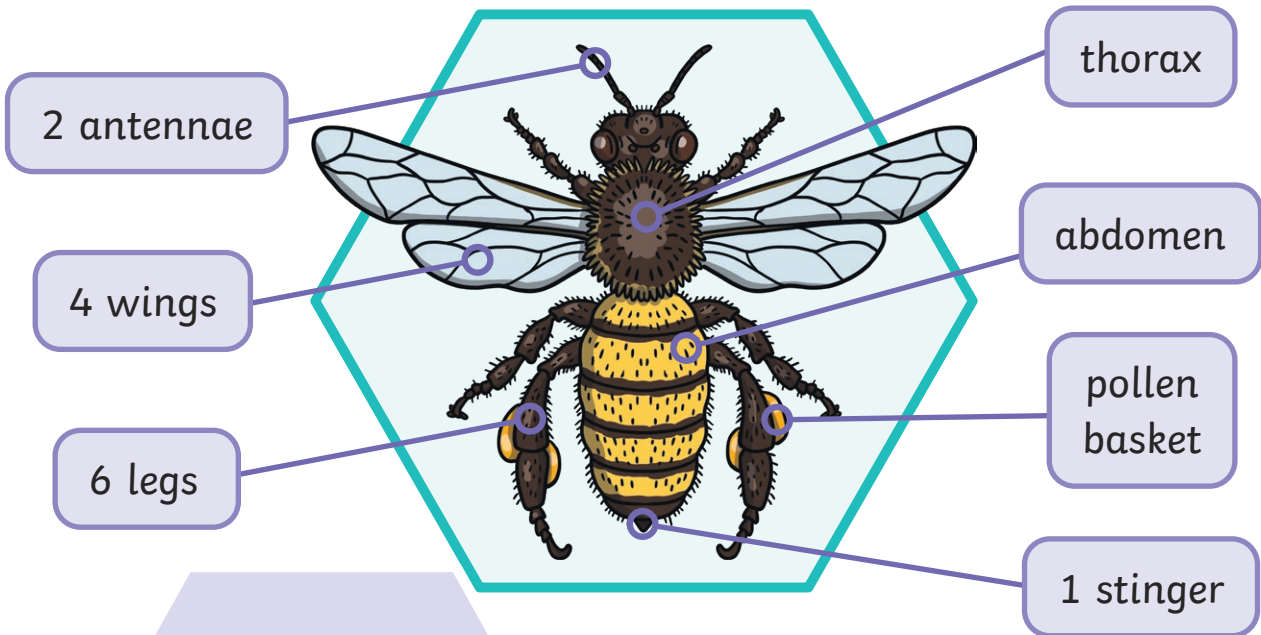
The nest is made up of **hexagons**.

5. What do honeybees eat? **Tick one.**

- wax, eggs and honey
- pollen, eggs and humans
- pollen, nectar and honey**

All About Honeybees

Honeybees are flying insects with yellow and black stripes.



Did You Know...?

Only female honeybees have stingers. The males cannot sting.

Inside the Nest

Thousands of honeybees live together in a nest. There are three types of honeybee in each colony.

Workers

The worker bees are all female. They do many jobs, such as building the nest, gathering food and looking after baby bees. Most honeybees in a colony are worker bees.

Drones

Drones are male. They help the queen to make baby bees. About one tenth of honeybees in a colony are drones.

Queen

There is one large bee that lays all the eggs. She can lay up to 1500 eggs per day.



Inside the nest, honeybees build honeycomb. Honeycomb is made up of lots of wax hexagons. The hexagon is a very strong shape.

Honeycomb

Each hexagon is called a 'cell'. The queen lays eggs in the cells. The larvae (baby bees) grow in cells. The honeybees also keep food in the cells.



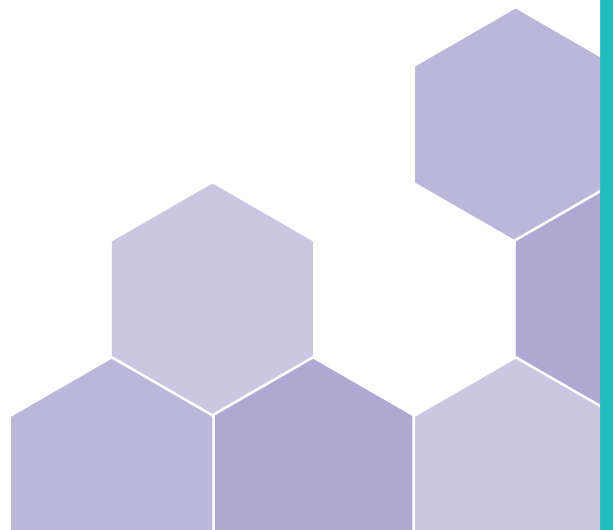
pollen

Pollination

Honeybees collect pollen from flowers to eat. Some pollen gets stuck to their bodies. It then gets dropped onto a different flower. This is called 'pollination'. Pollination helps new plants to grow. This is important for humans! Honeybees help us to grow the plants that we eat.

Did You Know...?

Honeybees have pollen baskets on their legs to help them carry pollen back to their nests.





honey

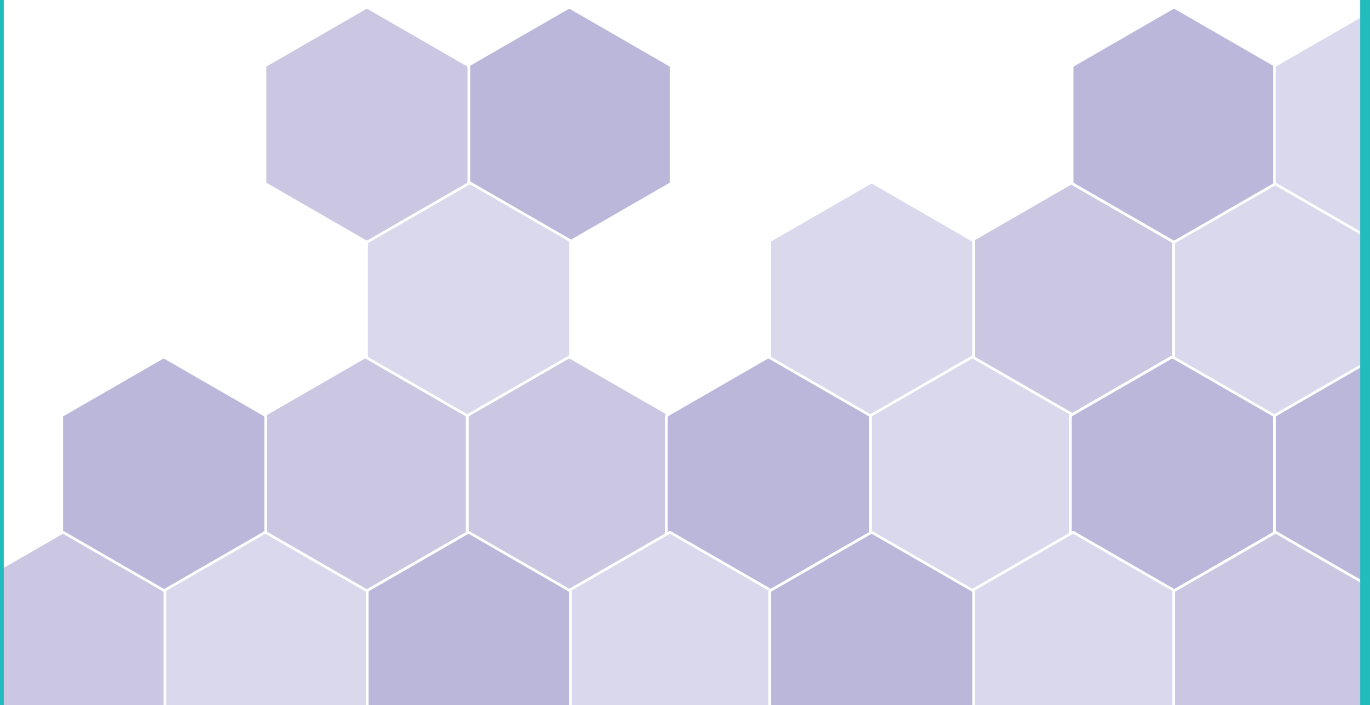
Making Honey

Honeybees get a sweet liquid called 'nectar' from flowers. They eat some and store some in their 'honey stomachs' to take back to the nest. They pass it to other workers, who chew the nectar until it turns into honey.

They put the honey into cells and save it to help them survive the winter. They eat the honey when there are fewer flowers around to provide pollen and nectar.

Did You Know...?

It takes eight honeybees their whole lives (six weeks) to make enough honey to fill a teaspoon.



Questions

1. Which honeybees can sting? **Tick one.**

- males
- females
- all honeybees

2. Draw **three** lines to match each word to its meaning.

drones ●

workers ●

queen ●

● a large bee that lays
1500 eggs per day

● male bees that make up
one tenth of the colony

● female bees that build
the nest, gather food and
look after baby bees

3. Find and copy one word which means the same as 'stay alive'.

4. Fill in the missing word.

Pollination helps new _____ to grow.

5. What food do bees make?

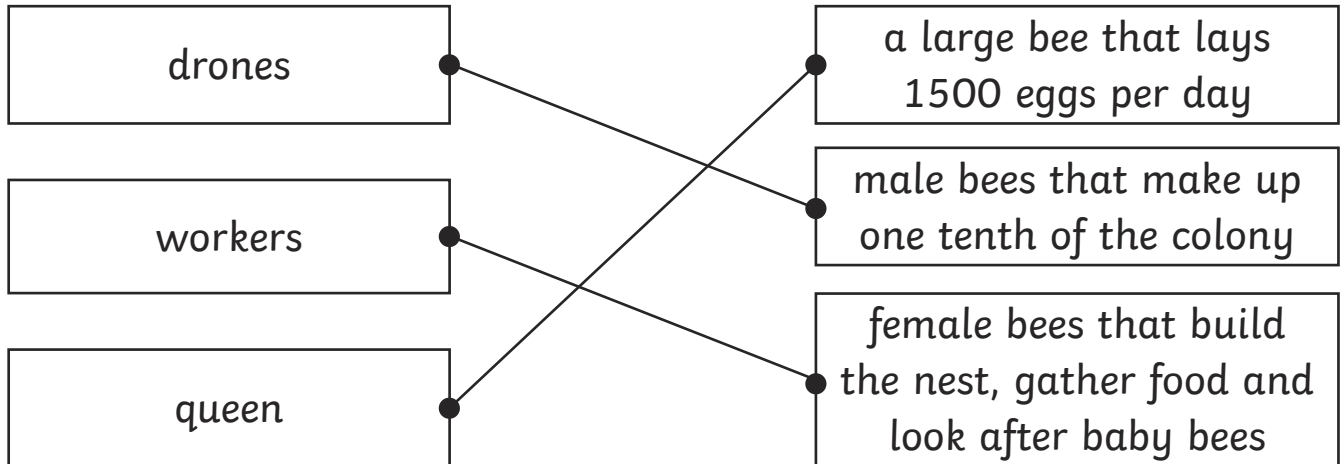
6. Why do you think it is important for humans to protect honeybees?

Answers

1. Which honeybees can sting? **Tick one.**

- males
- females**
- all honeybees

2. Draw **three** lines to match each word to its meaning.



3. Find and copy one word which means the same as 'stay alive'. **survive**

4. Fill in the missing word.

Pollination helps new **plants** to grow.

5. What food do bees make? **honey**

6. Why do you think it is important for humans to protect honeybees?
Children's own responses that make reference to honeybees helping with pollination, which is needed to grow the plants that humans eat.